

# UNPACKING THE IMPACTS OF THE COVID-19 PANDEMIC

a series by Business + Higher Education Roundtable

## FINANCIAL & LABOUR MARKET IMPACTS ON POST-SECONDARY STUDENTS

Post-secondary students are increasingly participating in Work-Integrated Learning (WIL). According to a 2018 Statistics Canada survey:

- 50% of post-secondary graduates who completed their studies in 2015 had participated in a WIL experience.
- Of the 19,564 graduates surveyed, 49% of university bachelor's graduates, and 60% of college graduates participated in a WIL.

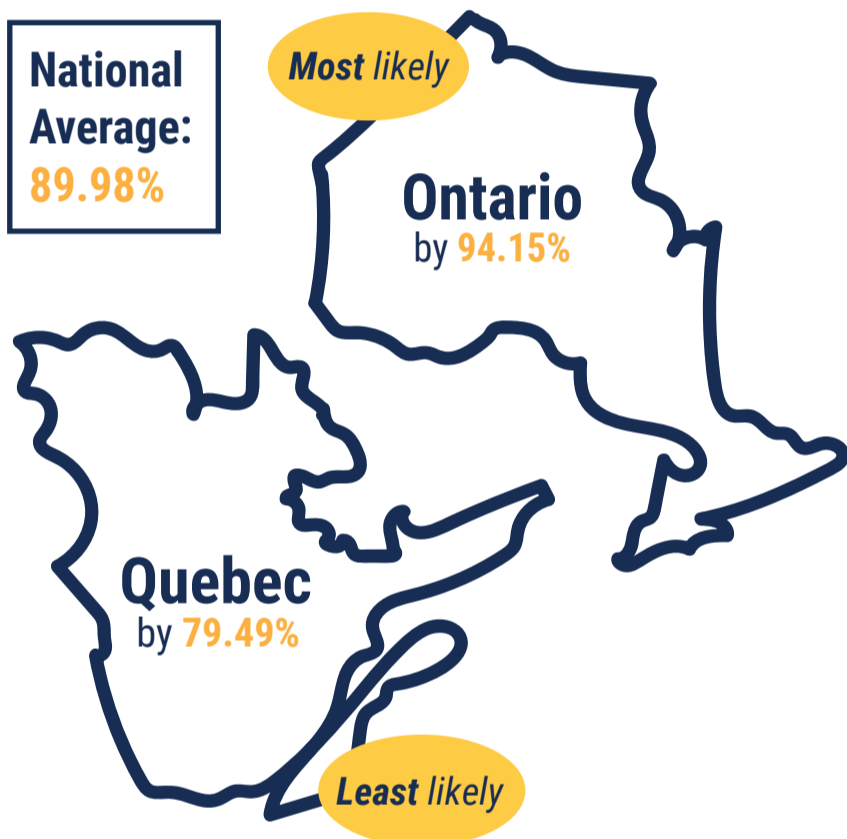
A recent study by the Canadian University Survey Consortium confirms this trend. The survey found that the number of 2018 university bachelor's graduates who participated in a WIL rose to 56%.

**COVID-19 Impacts:** WIL experiences are not the only professional opportunities that have been impacted by COVID-19. Post-secondary students across Canada are experiencing financial and labour market impacts. In 2020, Statistics Canada conducted a nationwide survey to examine the effects of COVID-19 on post-secondary students.

### On Labour Market Impacts...

Percentage of students that experienced a labour market impact due to COVID-19 by province.

Highest and lowest impacted provinces shown.



\*Labour market impacts will be explored in further detail in the next edition.

### On Loss of Job(s) and Concern Over Debt...

Education Level:	College / CEGEP Diploma	Bachelor's Degree	Master's / Professional Degree	PhD
Total Respondents*:	27,251	55,841	11,939	2,856
Breakdown of students having lost their job(s) or being unable to work due to COVID-19.	15.89%	18.63%	12.27%	9.31%
Answered "very or extremely" concerned about taking on more debt due to COVID-19.	35.35%	50.74%	49.82%	42.30%

\*Excludes respondents having answered 'Other'.

The statistics above were taken from the 'Impacts of COVID-19 Pandemic on Post-Secondary Students, 2020' study. This was a crowdsourcing survey conducted by Statistics Canada from April 19 to May 1 2020. In total, 101,902 students filled out the survey across the country.

November 2020 Edition